



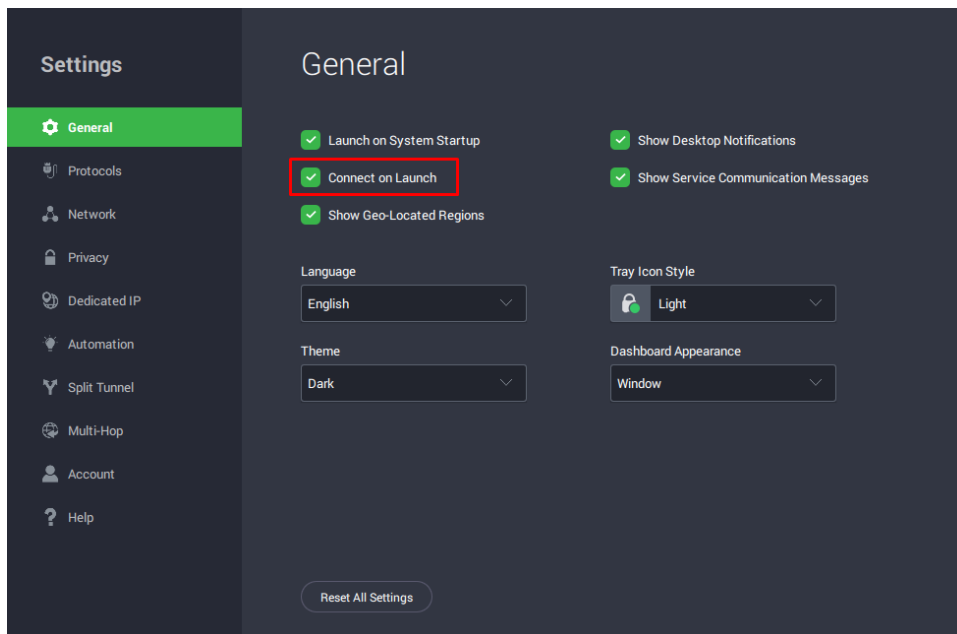
Knowledgebase > Technical > Troubleshooting > Installation > How do I configure the PIA Application to auto-start for non-administrative user accounts in Windows?

How do I configure the PIA Application to auto-start for non-administrative user accounts in Windows?

Joseph - 2022-06-10 - Installation

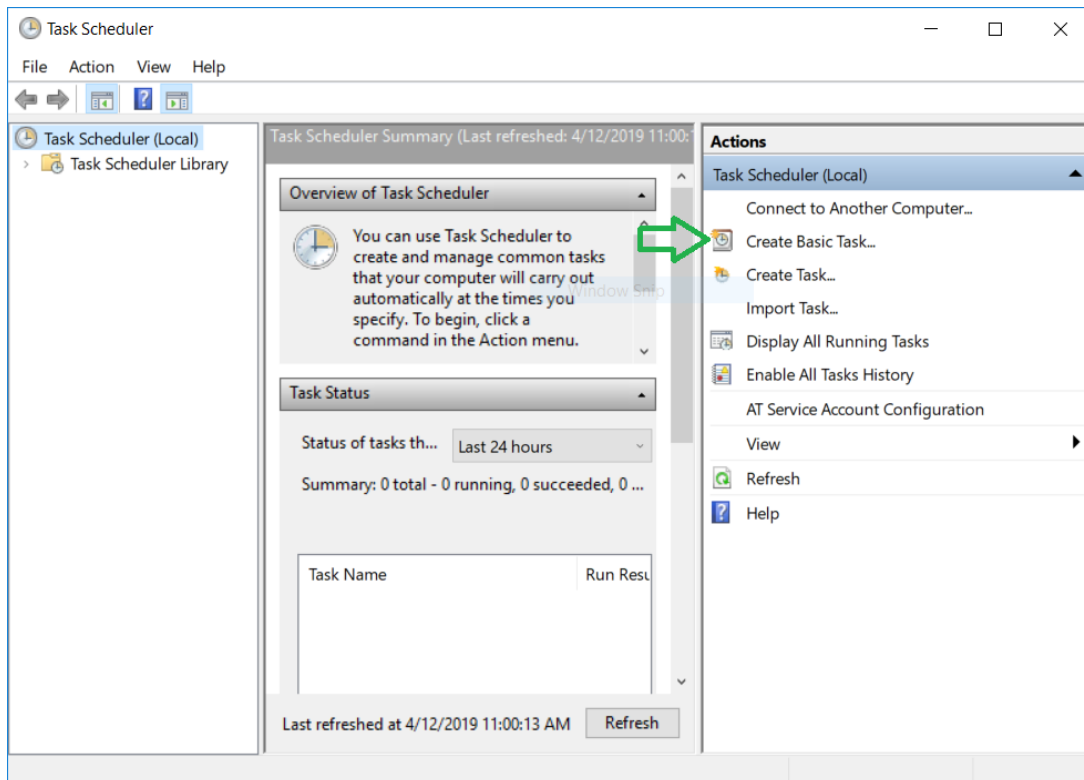
When the option 'Launch on System Startup' is selected in the interface on an administrative account, the application will start when logging in to the administrative account. This can also be invoked on a standard user account, but doing so requires taking the actions detailed below:

1. First, be sure you have installed the PIA application, which can be found here: <https://www.privateinternetaccess.com/pages/download>
2. Log in to the account you would like to configure the PIA application to auto-start on.
3. Open the PIA application and in the Settings > General tab of the application interface, select 'Connect on Launch'.

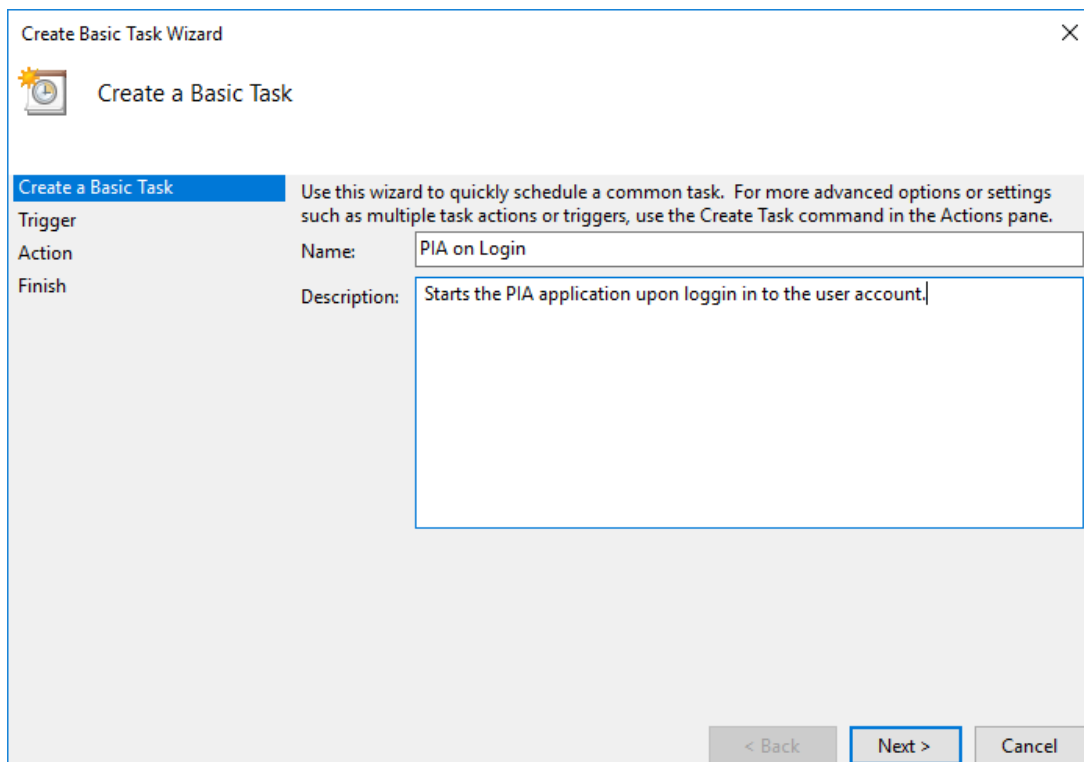


4. Close the PIA application
5. Open the Task Scheduler
 1. Press the 'Windows Key'
 2. Type "Task Scheduler" to locate the application
 3. Click the 'Task Scheduler' app to open it

6. Click 'Create Basic Task'



7. Title the task to indicate what it does, such as "PIA on Login"



8. Click 'Next'

9. For the trigger select 'When I log in'

The screenshot shows the 'Create Basic Task Wizard' window with the 'Task Trigger' step selected. The left sidebar lists 'Trigger', 'Action', and 'Finish'. The main area is titled 'When do you want the task to start?' and contains several radio button options. The 'Next >' button is highlighted with a blue border.

Create Basic Task Wizard

Task Trigger

Create a Basic Task

Trigger

Action

Finish

When do you want the task to start?

☐ Daily

☐ Weekly

☐ Monthly

☐ One time

☐ When the computer starts

☒ When I log on

☐ When a specific event is logged

< Back

Next >

Cancel

10. Click 'Next'

11. For the action select 'Start a Program'.

The screenshot shows the 'Create Basic Task Wizard' window with the 'Action' step selected. The left sidebar lists 'Trigger', 'Action', and 'Finish'. The main area is titled 'What action do you want the task to perform?' and contains three radio button options. The 'Next >' button is highlighted with a blue border.

Create Basic Task Wizard

Action

Create a Basic Task

Trigger

Action

Finish

What action do you want the task to perform?

☒ Start a program

☐ Send an e-mail (deprecated)

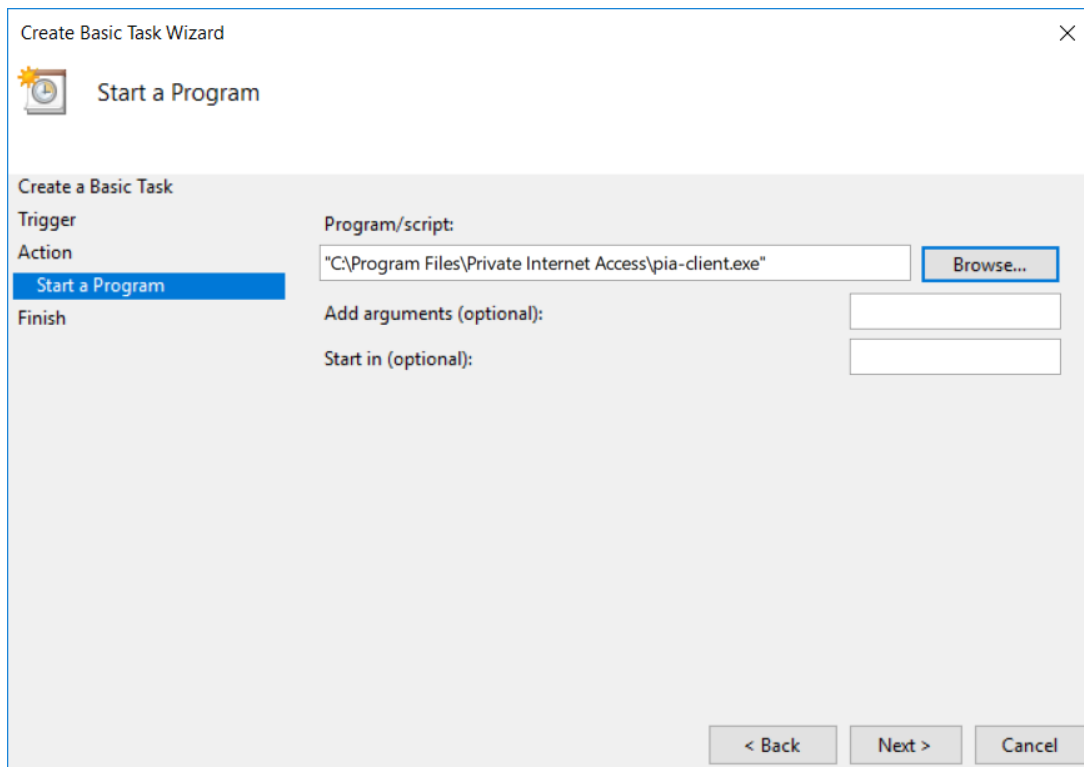
☐ Display a message (deprecated)

< Back


Next >

Cancel

12. Navigate to the location of the PIA client or type the file location as shown below.



Create Basic Task Wizard

 **Start a Program**

Create a Basic Task

Trigger

Action

Start a Program

Finish

Program/script: "C:\Program Files\Private Internet Access\pia-client.exe" Browse...

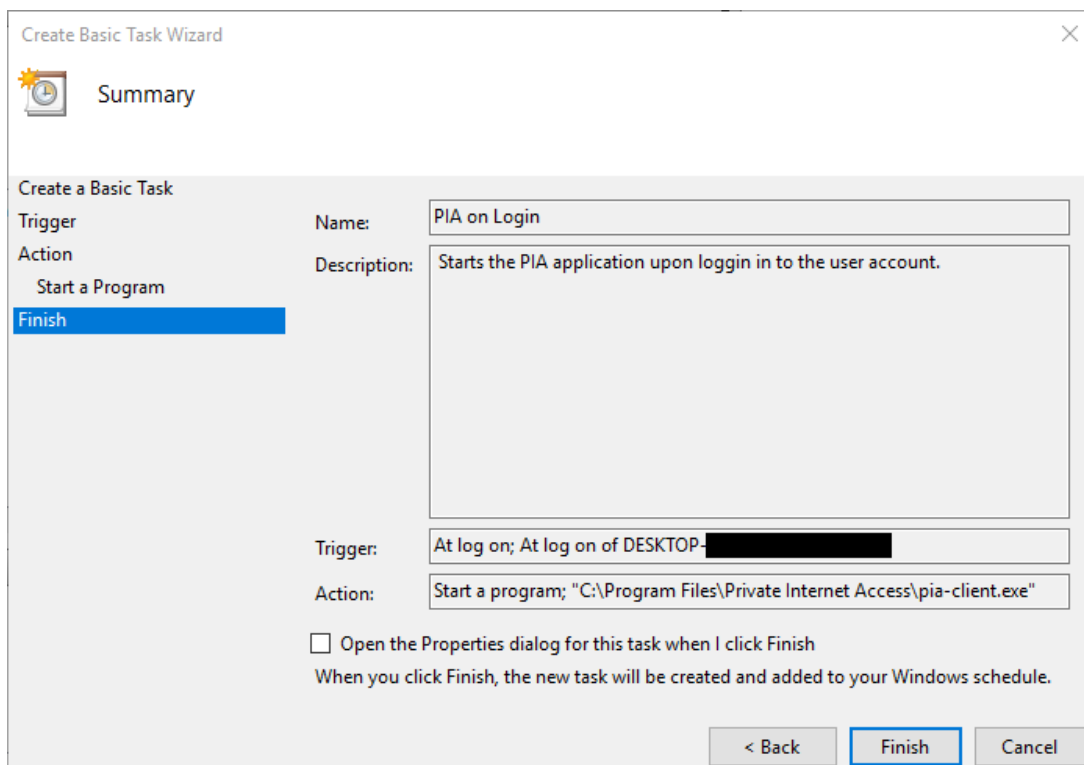
Add arguments (optional):

Start in (optional):


< Back Next > Cancel

13. Click 'Next'

14. On the finish screen no further customization is required, click 'Finish'.



Create Basic Task Wizard

 **Summary**

Create a Basic Task

Trigger

Action

Start a Program

Finish

Name: PIA on Login

Description: Starts the PIA application upon login in to the user account.

Trigger: At log on; At log on of DESKTOP- [redacted]

Action: Start a program; "C:\Program Files\Private Internet Access\pia-client.exe"

☐ Open the Properties dialog for this task when I click Finish

When you click Finish, the new task will be created and added to your Windows schedule.

< Back **Finish** Cancel

15. Close the task scheduler.

Now, if you log in on this user account the PIA application will start and connect when

possible.