

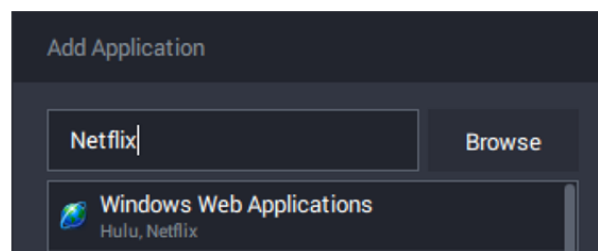
Split Tunnel App Examples

Kaneesha D. - 2019-10-08 - in Application & Features

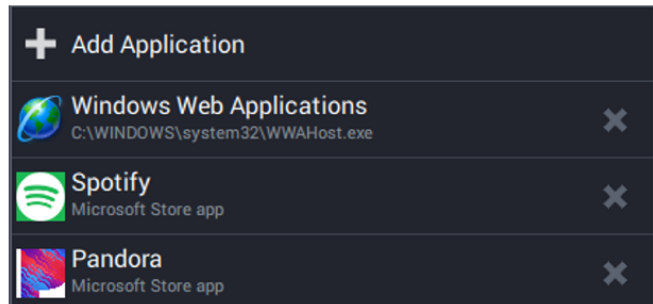
With the release of version 1.5 for our Desktop application we have introduced the ability to exclude programs from the VPN. When excluding specific popular apps or files from the VPN, the following information can be helpful if these popular apps or files do not populate on the browseable exclusion list.

Windows: Microsoft Store Apps:

On Windows, some apps that are downloaded from the Microsoft Store will not appear with their respective icon. For example, when excluding the Netflix or Hulu apps from the Microsoft Store, it will appear as Windows Web Applications on the exclusion list.



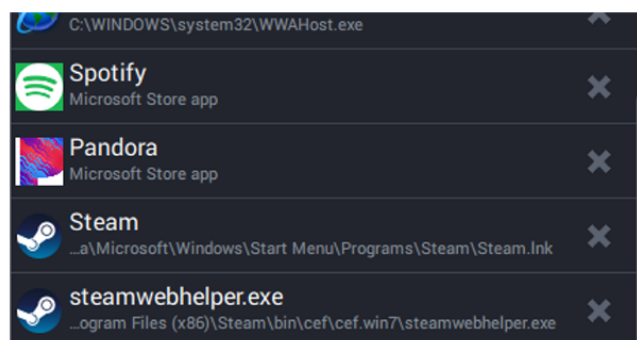
This is not the case for all apps from the Microsoft Store. Below shows the example of Netflix and Hulu being excluded from the VPN as well as other apps from the store.

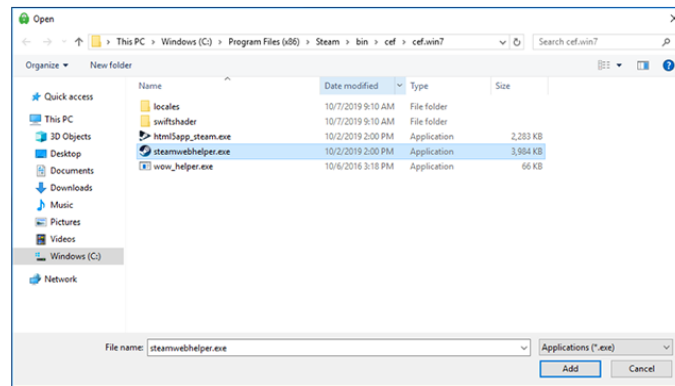


Steam Application:

For some users, you may wish to exclude the Steam application from the VPN. Aside from just excluding the Steam app, you will also need to exclude the steamwebhelper.exe file as well. To do so, please perform the following:

1. Click Add Application
2. Click the Browse button next to the Search bar
3. Next select Windows (C:) > Program Files (x86) > Steam > bin > cef > cef.win7 > steamwebhelper.exe.
4. Once selected, click the Add button

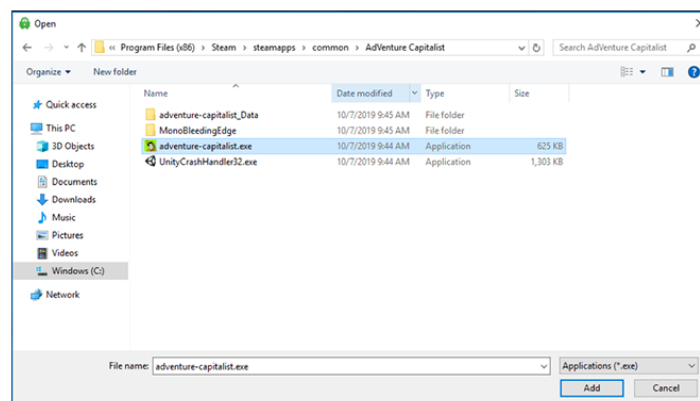


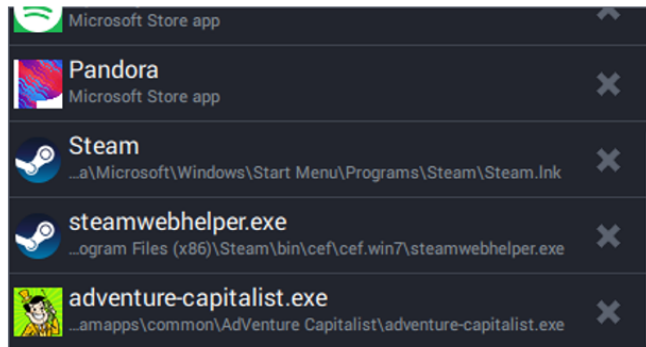


Specific Games:

Users may also wish to exclude a specific game from the VPN as well. For every game you wish to exclude, the following information will help you determine where your games are located so that you can add specific .exe files to the list.

1. Click **Add Application**
2. Click the **Browse** button next to the Search bar
3. Next select **Windows (C:) > Program Files (x86) > Steam > steamapps > common**
4. You will then see a list of your installed Steam games
5. Select the file for the desired game
6. Click the **.exe file** for the game in the installation folder and click the add button





The game should now be added to the exclusion list. If your games are not installed on your (C:) drive and you do not know how to find the file destination, the file path can be located by right clicking the game in your Steam Library > Properties > Local Files, and then Browse the Local Files. The destination path will then be displayed.

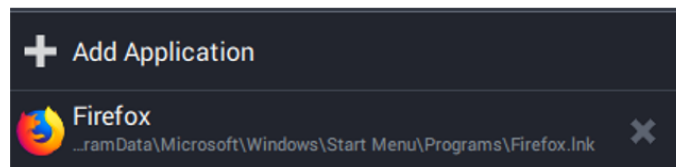
Example:

> This PC > Windows (C:) > Program Files (x86) > Steam > steamapps > common > AdVenture Capitalist

Known issue on Windows:

Adding applications to the Split Tunnel feature may prevent you from connecting to a localhost/loopback address.

For example, if you exclude Firefox, then attempt to connect to **http://127.0.0.1:8080**, the connection will fail.

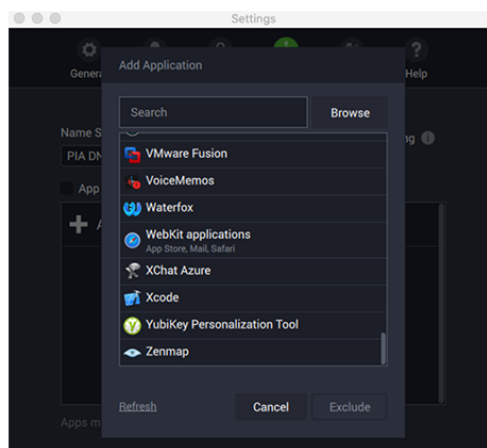


If the listening app is listening on all interfaces, a workaround is to connect to your local IP address instead. For example, if your local IP address is **192.168.1.140**, try connecting to **http://192.168.1.140:8080**. This only works if the listening application is listening on all interfaces.

MacOS:

To exclude specific applications on your Mac that do not auto-populate on the Add Application list, click the Browse button next to the Search bar. The applications list should become available. Locate the application you desire to exclude and then click Add.

If you wish to exclude multiple apps such as the App Store, Safari, the Mail app, and others, simply exclude WebKit applications option within the Add Application menu:



Linux:

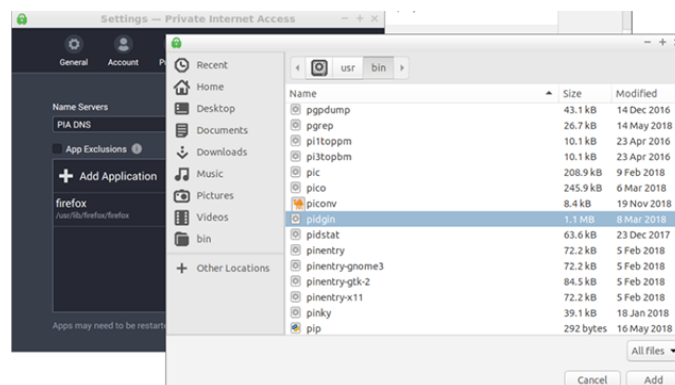
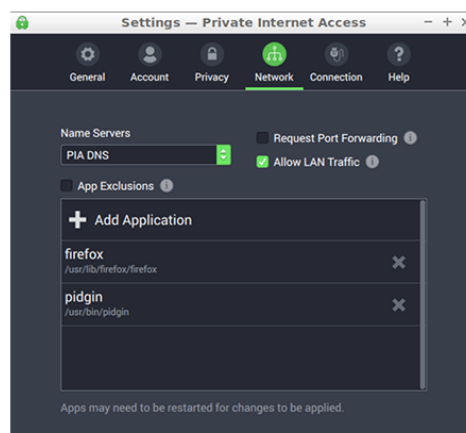
On Linux, users must browse for the executable they want to exclude, we do not enumerate

apps on Linux currently (due to the complexity of determining what executable a .desktop file would execute).

Finding the proper executable can be challenging for complex apps. For example, for Firefox, the proper executable is `/usr/lib/firefox/firefox`, not the one in `/usr/bin`.

There are a few ways to find the correct app:

- `readlink /proc/$(pgrep <executable> | head -1)/exe`
 - Ex: `readlink /proc/$(pgrep firefox | head -1)/exe`
- Look for a process in your task manager
 - Some task managers may provide the executable path
 - Or `readlink /proc/<PID>/exe`



We've compiled a list of common apps and their executable locations on Ubuntu. These may vary among distributions or versions, but it is a good starting point for many common apps.

- Chrome: `/opt/google/chrome/chrome`
- Firefox: `/usr/lib/firefox/firefox`

- Opera: /usr/lib/opera/opera
- Chromium: /usr/lib/chromium/chromium
- Brave: /usr/lib/brave/brave
- Thunderbird: /usr/lib/thunderbird/thunderbird
- Steam: ~/.local/share/Steam/ubuntu12_32/Steam
- Steamwebhelper: ~/.local/share/Steam/ubuntu12_64/steamwebhelper
- Hexchat: /usr/bin/hexchat
- Discord: /opt/discord/Discord
- Flatpak: /usr/libexec/flatpak-bwrap

Excluding `flatpak-bwrap` excludes all Flatpak apps, they cannot be selected individually. This is inherent in the Flatpak packaging system.

Applmage apps can be excluded by selecting the Applmage file.

Tags
split Tunnel